

# EXPLORE WORLD HERITAGE LISTED PURNULULU NATIONAL PARK

**GUIDED WALKING TOURS  
FLY-IN DAY TRIPS  
OVERNIGHT PACKAGES**

See the Bungle Bungle Domes, Cathedral Gorge,  
Echidna Chasm and Piccaninny Gorge



2021

**BOOKINGS 1800 899 029**

**BBGT.COM.AU**

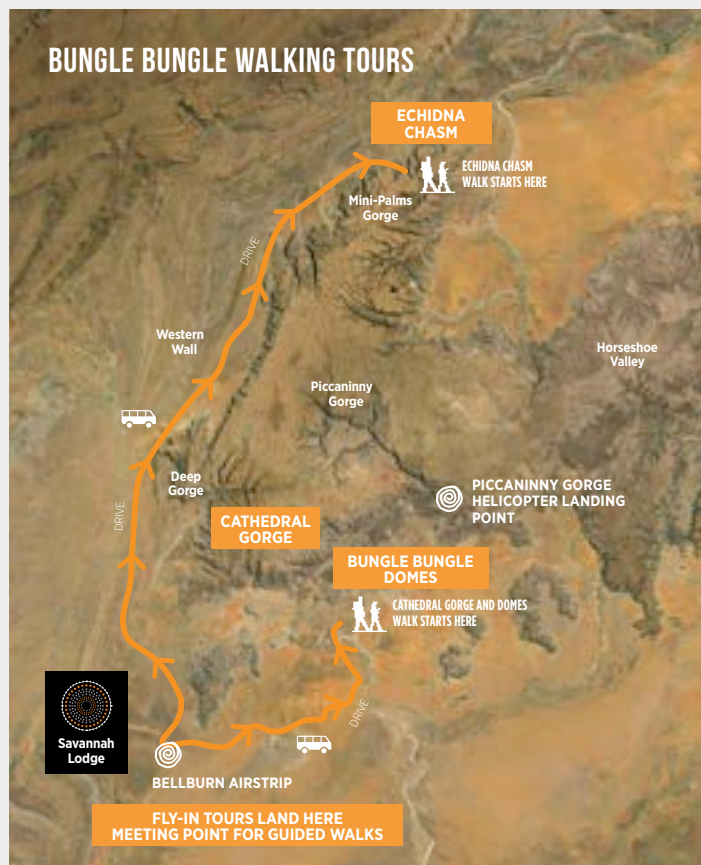


# ABOUT BUNGLE BUNGLE GUIDED TOURS



Bungle Bungle Guided Tours is an Accredited Tourism Business offering a unique experience, providing guided walking tours through the World Heritage listed Purnululu National Park. Locally owned, we are committed to looking after the environment we operate in and strive for best practices in eco-tourism to ensure the sustainability of Purnululu National Park so that it can be enjoyed by future generations.

One of only 16 UNESCO Natural World Heritage sites in Australia, Purnululu National Park covers almost 240,000 hectares of remote wilderness and includes the Bungle Bungle Range, a spectacular landscape of sculptured rocks and sandstone towers. Your guide will take you back to a time where Aboriginal people lived for some 40,000 years. Learn about bush-tucker, Aboriginal customs and the many reasons why Purnululu is World Heritage listed. Immerse yourself in the spirit of this ancient place.



## CULTURAL SIGNIFICANCE

The park holds cultural significance to both Jaru and Kija people with parts of the area being used as traditional meeting places. Purnululu National Park is jointly managed by the Traditional Custodians and the Department of Biodiversity, Conservation & Attractions.

## DID YOU KNOW?

The Bungle Bungle Range is more than 50 times the size of Uluru and remained undiscovered to tourists until 1983.

As the road into the national park can be challenging, we offer fly-in packages by plane or helicopter from Kununurra and Lake Argyle. We highly recommend making the most of your visit to Purnululu by adding on an overnight stay in the heart of the national park at Bungle Bungle Savannah Lodge.

## FLY | WALK | STAY | FLY PACKAGES FROM KUNUNURRA

The tours listed in the table below include a return scenic flight between Kununurra and Purnululu National Park.



PACKAGE	TRANSPORT		GUIDED WALKS		ACCOMMODATION		DETAILS	
	Scenic Plane Flight	Bungle Bungle Domes	Cathedral Gorge	Echidna Chasm	Bungle Bungle Savannah Lodge	Included	Duration	Price
<b>KB01-S</b>	✓	✓	✓		1 night	Morning & Afternoon tea, Lunch, Dinner, Breakfast	DAY 1 Departs Kununurra 9:00am* DAY 2 Return approx. 8:30am or 11:30am	Adult \$1,415 Child \$1,236
<b>KB01-SN</b>	✓	✓	✓	✓	1 night	Morning tea x 2 Lunch x 2 Afternoon tea x 2 Dinner, Breakfast	DAY 1 Departs Kununurra 9:00am* DAY 2 Return approx. 5:00pm	Adult \$1,683 Child \$1,405
<b>KB02-SN</b>	✓	✓	✓	✓	2 nights	Morning tea x 2 Lunch x 2 Afternoon tea x 2 Dinner x 2 Breakfast x 2	DAY 1 Departs Kununurra 9:00am* DAY 3 Return approx. 8:30am or 11:30am	Adult \$1,980 Child \$1,662

Single Supplement \$158 per night. Complimentary pick-up 45 minutes prior to departure. Children 3-12 years inclusive. \*6:00am departure in September and subject to availability.



Mini Palms, Bungle Bungle Range

# HOW TO GET HERE

## FLY BY PLANE

Fly-in packages are available with departures from Kununurra, flying in an air-conditioned fixed-wing aircraft with Aviair.



## FLY BY HELICOPTER

Helicopter transfers with HeliSpirit are available from Kununurra and Lake Argyle.



## SELF-DRIVE

The 53km drive into the national park from the Great Northern Highway is via a rugged track that is only accessible to four wheel-drive vehicles. This can take approx. two hours.





LEVEL 2 | MODERATE FITNESS REQUIRED

## CATHEDRAL GORGE AND DOMES GUIDED WALK

CODE KBB1 | DAY TOUR



<b>Depart:</b>	Kununurra
<b>Duration:</b>	9:00am to 5:00pm (April to August) 6:00am to 2:00pm (September)
<b>Includes:</b>	Scenic flight from Kununurra to Bungle Bungle and return
<b>Meals:</b>	Morning tea, packed picnic lunch and afternoon tea
<b>Price:</b>	Adult \$799 Child \$679

### Self Drive Option

Guided walking tour departing Purnululu  
Approx. 5 hours | Adult \$319 Child \$169



### BUNGLE BUNGLE FLIGHT + CATHEDRAL GORGE & DOMES GUIDED WALK

Start your day with an unforgettable scenic flight from Kununurra over the Ord River Irrigation Area, Diversion Dam, Carr Boyd Ranges, Osmand Ranges, the Ord River, Bow River and the magnificent Lake Argyle.

Landing at a remote unsealed airfield in Purnululu National Park, you will be picked up by your guide in an air-conditioned 4WD bus to take you closer to the Bungle Bungle Range. Enjoy a moderate 3km guided walk amongst the famous black and orange banded beehive structures on the domes walk.

Your guide will take you into Cathedral Gorge, where towering cliffs open up to form a space with awe-inspiring natural acoustics. Walk along the bed of Piccaninny Creek, which flows only in the monsoon waterfall season.

Return via a scenic flight to Kununurra, on the way viewing the Argyle Diamond Mine where rare pink diamonds were once mined.





# + OVERNIGHT

## CATHEDRAL GORGE

**What makes this so unique?** Known as one of the best natural amphitheatres in the world, Cathedral Gorge must be experienced in person to appreciate the beauty of this natural wonder. Often said to be 'impossible to capture the magic on camera' Cathedral Gorge leaves its visitors mesmerised, with a feeling that cannot be put into words. Walk among banded domes, towering cliffs and honeycomb rocks toward the amphitheatre.

### CATHEDRAL GORGE DIFFICULTY LEVEL

This is a moderate approx. 3km walk along a creek bed with sand & loose stones, short rocky slopes and a ladder with double handrails. Allow approx. 2-3 hours return.

**CODE KB01-S | 1 DAY + 1 NIGHT**

## BUNGLE BUNGLE FLIGHT + CATHEDRAL GORGE & DOMES GUIDED WALK + OVERNIGHT STAY AT BUNGLE BUNGLE SAVANNAH LODGE

After your day tour (page 4), why not spend the night in the heart of Purnululu National Park?

Relax by the pool or appreciate the beauty of an East Kimberley sunset at the Bungle Bungle Savannah Lodge. Learn more about the dinner, bed and breakfast package on page 10.

Return to Kununurra with Aviair the following morning, enjoying aerial views of the Argyle Diamond Mine, Ragged Ranges and Carr Boyd Ranges.



<b>Depart:</b>	Kununurra
<b>Times:</b>	Departure Day 1: 9:00am (April to August) 6:00am (September) Return Day 2: 8:30am or 11:30am
<b>Includes:</b>	Scenic flight from Kununurra to Bungle Bungle and return, 1 x night Bungle Bungle Savannah Lodge and Cathedral Gorge & Domes Guided Walk
<b>Meals:</b>	Lunch, dinner, breakfast and snacks are all included
<b>Price:</b>	Adult \$1,415 Child \$1,236 Single supplement \$158 per person



LEVEL 3 | MODERATE TO HIGH FITNESS REQUIRED

## ECHIDNA CHASM AND NORTHERN END WALKS

CODE BB2 | DAY TOUR



<b>Depart:</b>	Bungle Bungle Savannah Lodge, Purnululu National Park
<b>Duration:</b>	8:00am to 3:30pm
<b>Meals:</b>	Morning tea, packed picnic lunch and afternoon tea
<b>Price:</b>	Adult \$319 Child \$169

### ECHIDNA CHASM AND NORTHERN END WALKS

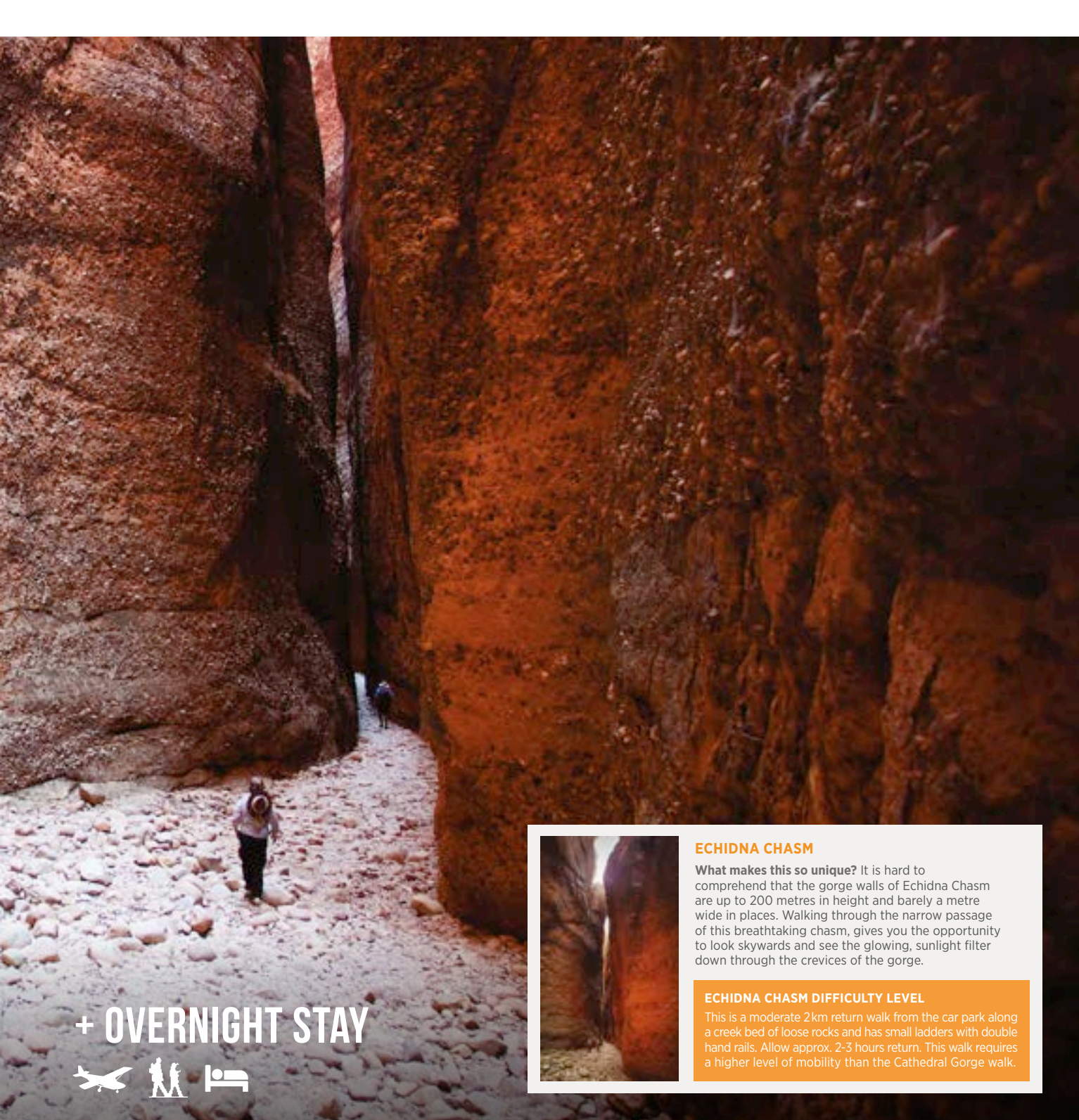
**Discover towering red rock gorges and chasms filled with Livistona palm trees**

A 65 minute drive takes you northwards along the Western Wall of the Bungle Bungle Range. A rocky path leads your walk into Echidna Chasm, which narrows until it is just two shoulders' width apart. Gazing skywards to the bright blue sky, the orange towering walls look as if they are lit from within. Livistona palm trees cling to the vertical sides.

This tour also presents the opportunity to visit nearby walking trails at the northern end of the national park.

A good level of mobility is required for this 1.5 hour northern walk.





+ OVERNIGHT STAY



#### ECHIDNA CHASM

**What makes this so unique?** It is hard to comprehend that the gorge walls of Echidna Chasm are up to 200 metres in height and barely a metre wide in places. Walking through the narrow passage of this breathtaking chasm, gives you the opportunity to look skywards and see the glowing, sunlight filter down through the crevices of the gorge.

#### ECHIDNA CHASM DIFFICULTY LEVEL

This is a moderate 2km return walk from the car park along a creek bed of loose rocks and has small ladders with double hand rails. Allow approx. 2-3 hours return. This walk requires a higher level of mobility than the Cathedral Gorge walk.



#### CODE KB01-SN | OVERNIGHT PACKAGE

##### 2 GUIDED WALKS OVER 2 DAYS + OVERNIGHT

- Depart:** Kununurra
- Times:** Departure Day 1: 9:00am  
Returns Day 2: 5:00pm
- Includes:** Scenic flight from Kununurra to Bungle Bungle and return. 1 x night at Bungle Bungle Savannah Lodge, Cathedral Gorge & Domes Guided Walk and Echidna Chasm and Northern Gorges Guided Walk. Walks are split over two days.
- Meals:** Lunch, dinner, breakfast and snacks are all included
- Price:** Adult \$1,683 Child \$1,405

#### CODE KB02-SN | 2 NIGHT PACKAGE

##### 2 GUIDED WALKS OVER 2 DAYS + 2 NIGHTS

- Depart:** Kununurra
- Times:** Departure Day 1: 9:00am.  
Returns Day 3: 8:30am or 11:30am
- Includes:** Scenic flight from Kununurra to Bungle Bungle and return. 2 x nights at Bungle Bungle Savannah Lodge, Cathedral Gorge & Domes Guided Walk and Echidna Chasm and Northern Gorges Guided Walk. Walks are split over two days.
- Meals:** Lunches, dinners, breakfasts and snacks are all included
- Price:** Adult \$1,980 Child \$1,662



## LEVEL 3 | MODERATE TO HIGH FITNESS REQUIRED

Discover the ancient wonders of Purnululu National Park on this inclusive adventure in both the north and south ends of the park.

# CATHEDRAL GORGE, DOMES & ECHIDNA CHASM GUIDED WALK



### BUNGLE BUNGLE DOMES

**What makes this so unique?** The beehive shaped striped sandstone domes are like nothing else. Walking along Piccaninny Creek with the domes towering above you on either side, will leave you feeling captivated by this ancient place. The enormity of these landforms combined with the eye-catching orange and black banding, takes you on a visual journey like no other.

### THE DOMES DIFFICULTY LEVEL

This is one of the easier walks within the national park with a 700 metre loop walk through sand and loose pebbles. Allow approx. 1 hour return.

## CODE KBB3 | DAY TOUR

### CATHEDRAL GORGE, DOMES + ECHIDNA CHASM GUIDED WALK



<b>Depart:</b>	Kununurra
<b>Duration:</b>	6:00am to 5:00pm
<b>Includes:</b>	Scenic flight from Kununurra to Bungle Bungle and return
<b>Meals:</b>	Morning tea, picnic lunch and afternoon tea
<b>Price:</b>	Adult \$1,219 Child \$1,030

#### Self Drive Option

Guided walking tour departing Purnululu  
Approx. 8 hours | Adult \$419 Child \$220



After a short drive to the beginning of the Bungle Bungle range, enjoy a moderate 3km guided walk amongst the famous black and orange banded domes, often beautifully contrasted by the vivid blue sky. Follow your guide to Cathedral Gorge, where you will be surrounded by impressive towering cliffs and experience the phenomenal natural acoustics of the Gorge. Board the 4WD bus again for approx. 45-60 minute drive to the northern end of the park. A tasty picnic lunch will be provided to keep you fuelled for the next leg of your exploration. After lunch, follow your tour guide on a 1.5-hour return walk into the incredible Echidna Chasm. The rocky path you follow on this walk weaves between towering cliff faces, and at times will narrow to a width of less than two metres. Gazing skywards to the bright blue sky, the orange towering walls look as if they are lit from within and are scattered with Livistona palm trees clinging to the walls.

Return to Kununurra on your scenic flight, flying over the Argyle Diamond Mine and Carr Boyd Ranges.

**This walk requires you to walk down rocky creek beds, climb over boulders and navigate stairs, so we recommend this tour to those with a high level of mobility.**



LEVEL 5 | HIGH LEVEL OF FITNESS REQUIRED

## PICCANINNY GORGE HELI-HIKE

### PICCANINNY GORGE DIFFICULTY LEVEL

The hike is up to 10km return and requires a high level of fitness and mobility. The rocky creek bed of Piccaninny Gorge is classed as a level 5 walk, with no designated track.

CODE BB4 | DAY TOUR

### HELICOPTER FLIGHT + PICCANINNY GORGE GUIDED WALK



<b>Depart:</b>	Bellburn Airstrip Purnululu National Park
<b>Time:</b>	Departure 7:00am
<b>Duration:</b>	Approx. 8 hours
<b>Includes:</b>	Scenic helicopter transfer to and from the gorge
<b>Meals:</b>	Lunch, morning tea and afternoon tea included
<b>Price:</b>	\$1,017 per adult (children 12 years+ only)

**Self Drive Option**  
Fly-in packages available on request



### Attention avid hikers! This is the tour for you.

Piccaninny Gorge has only been explored by very few people as it is a normally 3-day journey on foot. This tour provides helicopter access, allowing you to explore the best parts of the Gorge in a single day. The untouched rugged gorge seems prehistoric and you will feel like you are in another world once inside the gorge.

Meet your tour guide at the HeliSpirit shade area at Bellburn airstrip in Purnululu National Park. After your briefing, board a helicopter to fly over the south west of the Bungle Bungle to "Y" Gorge before soaring across the top of the enormous massif to the mouth of spectacular Piccaninny Gorge where we land.

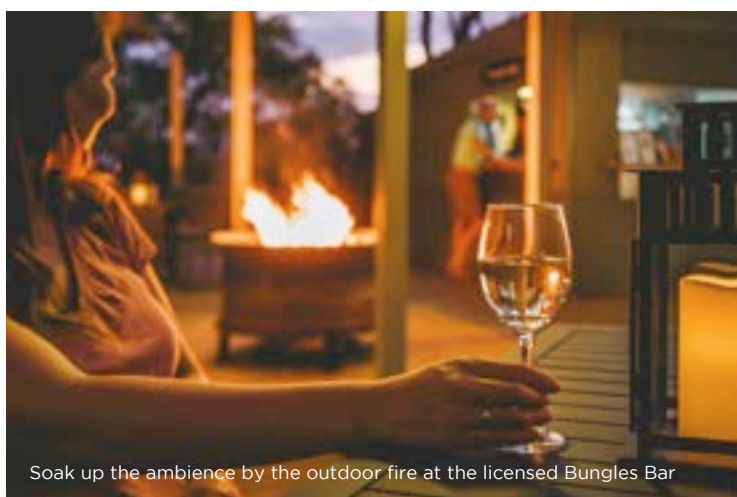
Your expert guide will lead the way as you walk where only few have explored before. This is a challenging, yet highly scenic 10km hike along a rocky creek bed – this is the largest of all the gorges in Purnululu National Park.

Your return helicopter flight continues from the mouth of the gorge, along the southern face, following Piccaninny Creek where you can view Cathedral Gorge and soar over the famous striped beehive shaped domes.

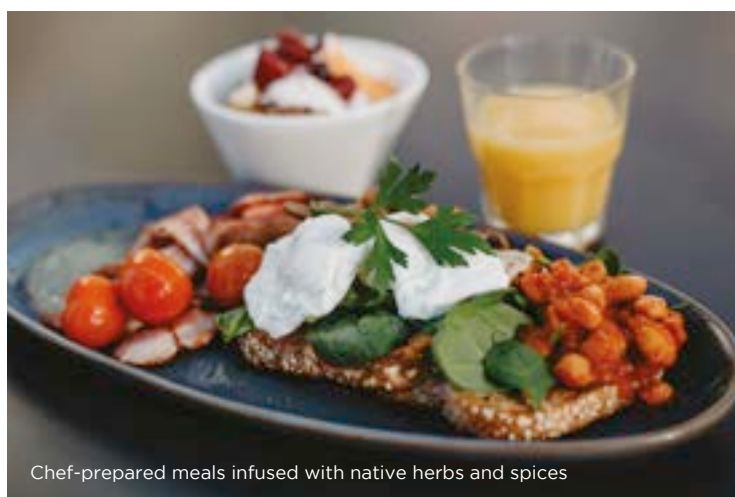




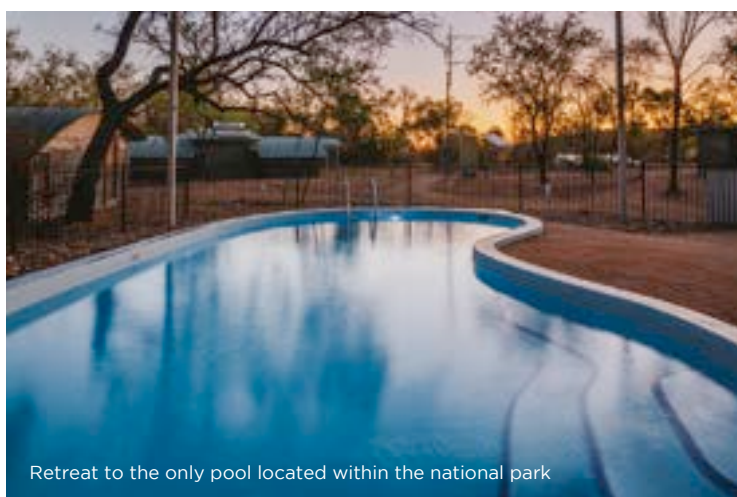
There are few lifetime experiences that can match exploring the Bungle Bungle by day and then staying the night in the heart of Purnululu National Park



Soak up the ambience by the outdoor fire at the licensed Bungles Bar



Chef-prepared meals infused with native herbs and spices



Retreat to the only pool located within the national park

## BUNGLE BUNGLE SAVANNAH LODGE

All of our tours have the option to add an overnight stay in eco-accommodation at the Bungle Bungle Savannah Lodge.

After a day exploring, retreat to the only pool located within the national park or share stories of your days' adventures while relaxing by the open outdoor fire or with a refreshing beverage from the licensed Bungles Bar. Indulge in freshly prepared homestead-style meals for both dinner and breakfast, with the option to sit indoors or out on the deck under starry skies.

The cabins are stand-alone and feature multiple louvre windows for air-flow throughout, a pedestal fan, bedside tables, wall-mounted lights and comfortable hotel quality queen or king split beds. Your private ensuite is fitted with a flushing toilet, heated shower, hand basin and mirror, toiletries, quality towels and 240-volt power.



## AVIAIR SCENIC FLIGHT TRANSFERS

Tours departing from Kununurra include a return scenic flight with Aviair. All aircraft have high wings, large windows, pilot commentary, and most importantly each aircraft is air-conditioned. Aviair have the youngest fleet of aircraft in Kununurra and safety is a priority.

You will start your tour with a once in a lifetime scenic flight with views of the magnificent Ord River, the vastness of Lake Argyle, Lissadell and Texas Downs Stations, the rugged Osmand Ranges and a picturesque circuit over the Bungle Bungle Range.

Your return flight to Kununurra provides aerial views of the Argyle Diamond Mine, Ragged and Carr Boyd Ranges.

### Why fly with Aviair?

- ✓ All planes are air-conditioned, with large windows and high wings for optimal viewing
- ✓ Courtesy transfers to and from our terminal within Kununurra
- ✓ Complimentary cold bottled water, cooling towels and sweets
- ✓ Locally owned award-winning company with over 37 years experience
- ✓ Complimentary information booklet



aviair

## SCENIC HELICOPTER FLIGHT

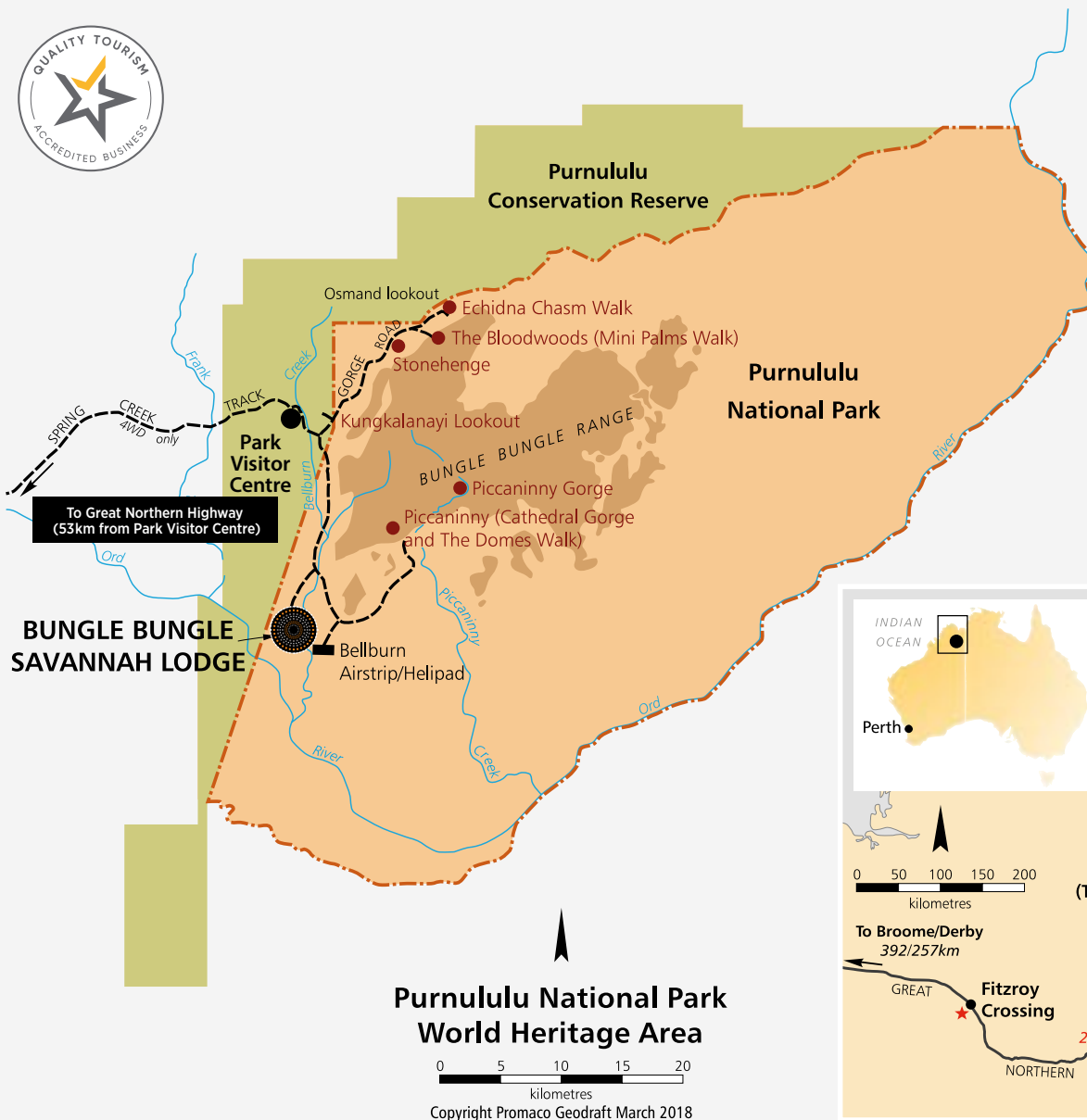
HeliSpirit offer scenic helicopter flights over the Bungle Bungle. This is a must-do for your trip to Purnululu National Park, with the flight offering fantastic photo opportunities and providing an unforgettable perspective of the landscape.

Choose from one of three flights departing from within the national park, or depart from Kununurra or Lake Argyle with an adventure-filled guided walk and/or accommodation package.

HeliSpirit







## TERMS & CONDITIONS

### Cancellation policy

#### Day scenic flights/tours:

Within 24 hours or less of departure:  
NON-REFUNDABLE.

24 hours to 7 days prior to departure: 20%  
administration fee will be charged per booking.

#### Overnight tour packages:

Within 7 days or less of departure:  
NON-REFUNDABLE.

8 days to 14 days prior to departure:

50% of booking will be retained.

15 days to 30 days prior to departure:

20% of booking will be retained.

A medical certificate may be requested  
if cancellation is on the grounds of illness.

*We strongly recommend that all customers  
take out travel insurance. In the event of a  
tour being cancelled by us, customers will  
be entitled to a full refund without penalty.*

### Flight luggage restrictions

We prefer soft luggage only and a  
maximum of 8kg per person. All care  
is taken but no liability is accepted for  
damage to passenger's personal items.

### Child age/infant policy

Infants are classified as 0-2 years and may travel  
free of charge on their parent's lap. Please note  
that only one infant may travel per aircraft.  
Children are classified as 3-12 years of age  
inclusive and must be accompanied by an adult.

### Minimum numbers

A minimum of 2 passengers or the equivalent  
cost is required to confirm a tour booking,  
unless the tour is already confirmed to run.  
Please call our reservations team to check  
availability for one passenger. All overnight  
accommodation package rates are Twin Share,  
Single Supplement prices are available.

### Check-in time

Passengers must be at the aircraft departure  
point/tour departure point, 30 minutes prior  
to scheduled departure time.

### Seat weight limit

The maximum seat weight limit on the  
Robinson R44 helicopter is 136kg. Seat  
weight limits may apply on fixed-wing flights.

### Safety

Our guides have the right to refuse admission  
to guests they believe are not physically able  
to participate in the tour and may be a danger  
to themselves or others.

### National Park fees

Applicable National Park fees are included  
in all Bungle Bungle Savannah Lodge rates.

#### Park camping fees:

\$17.60 per adult and \$8.80 per child.

#### Fly/drive license fees:

\$33.00 per adult and \$16.50 per child.

Self-driving guests are required to pay entry  
fees on arrival into the National Park at the  
Visitor Information Centre. Please see fee  
schedule on [www.dpaw.wa.gov.au](http://www.dpaw.wa.gov.au).

### Disabled passengers

Please advise the level of assistance required with  
a minimum of 48 hours prior to departure time.  
Staff are not permitted to lift any passengers.

### Cameras - Helicopter flights

Cameras and phones must have a lanyard/wrist  
strap. Tablets and iPads are not permitted on  
board.

### Seasonality

The start and end date of the scheduled season  
may vary due to weather conditions.



### Validity of rates

Valid for 2021.

Flight times and tour durations are estimates only.  
Please visit [bbgt.com.au](http://bbgt.com.au) for full terms & conditions.

# BOOKINGS 1800 899 029

BOOK ONLINE • [BBGT.COM.AU](http://BBGT.COM.AU) | EMAIL • [BOOKINGS@BBGT.COM.AU](mailto:BOOKINGS@BBGT.COM.AU)

Follow us   @bunglebungleguidedtours